

SHIELD LUBRICATORS

Shield TML High-Precision Lubrication System

TWO DESIGNS AND MULTIPLE SIZES TO MEET THE LUBRICATION NEEDS OF YOUR EQUIPMENT

Shield TML provides precise discharges of lubricant to your equipment, supplying the perfect amount of lubricant at the perfect time. With a unique, powered design, Shield TML operates automatically, independent of temperature and pressure, extending bearing life and reducing maintenance costs and safety concerns.

Available in two distinct designs, TMLb and TMLe, Shield TML consists of an electromechanical drive and a lubricant cartridge (LC) with 60, 120 or 250 cc (2.03 oz, 4.06 oz or 8.45 oz) of lubricant.

TMLb

Shield TMLb utilizes a battery pack to power the electromechanical drive. The desired discharge period and LC size can easily be selected with the setting button and are immediately visible in the LCD. The current operating status is indicated on the LCD and visible all around via the LED signal lights (red/green), which are recognizable from a distance.

TMLe

Shield TMLe is the optimal solution to digitize your lubrication. Its unique design is supplied with external power via a cable to power the electromechanical drive. The operating status can be transmitted to a PLC through this connection. Shield TMLe has two integrated operating modes, TIME and IMPULSE, to allow for flexible use. The TIME mode dispenses lubricant based on operating hours, while the IMPULSE mode dispenses a precisely defined quantity of lubricant when voltage is applied.



APPLICATIONS / MACHINE ELEMENTS

Shield TML is used for single-point lubrication on multiple applications, including fin fans, pumps, electric motors and blowers. Thanks to precise lubricant metering, Shield TML is ideal for lubrication with specified lubricant quantities.

Shield TML is protected against dust and water jets (IP 65), subject to correct assembly of the individual parts.

PRODUCT CHARACTERISTICS

Electromechanical, reusable drive with battery pack (TMLb) or power supply (TMLe)

LED (red/green) visible all around – signals functioning and any errors

Pressure build-up to 6 bar (87 psi) allows remote mounting up to 5 m (16.4 ft)

Manual additional discharge via push button (purge)

TMLb:
LCD with setting button displays discharge period, LC size and operating status

Setting: 1, 2, 3 ... 12 months and LC size

TMLe:
LCD with setting button shows discharge settings, LC size and operating status

Setting: Mode, LC size, discharge quantity and PIN

BENEFITS

- Reliable, precise lubricant discharge independent of temperature and counter pressure

- Quick function control via LED signals saves time and relieves maintenance workers

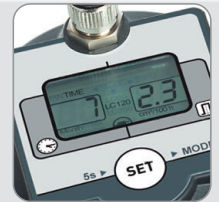
- Installation outside of dangerous areas or at easy-to-reach places increases workplace safety and saves time

- Higher equipment availability, since exchange during running operation possible

- Lubrication point can be purged to clear blockages

- Simple and self-explanatory operation
- Precise settings according to requirements prevents lubrication starvation and over-lubrication
- Settings can be changed at any time
- Can be turned off for extended equipment shutdowns

- Flexible handling thanks to simple TIME or IMPULSE modes: can be changed any time
- Fast, simple control of settings
- PIN request protects against possible tampering
- Can be controlled via PLC



TECHNICAL DATA

TMLb

Drive – reusable
Electromechanical function using battery pack

Discharge period
1, 2, 3 ... 12 months

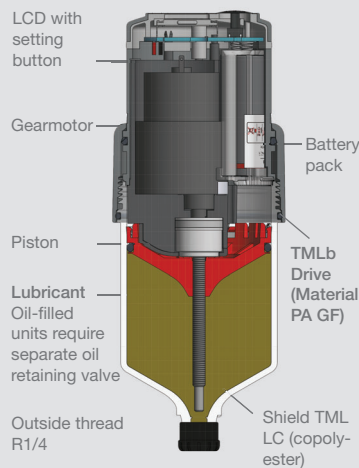
Lubricant volume
60 cc, 120 cc or 250 cc /
2.03 oz, 4.06 oz or 8.45 oz

Operating temperature
-20°C to +60°C / -4°F to 140°F

Pressure build-up
6 bar / 87 psi

Protection class
IP 65

Standard & special lubricants
Greases up to NLGI 2/oils



Dimensions
LC 60: Ø 75 x 155 mm
Ø 2.95 x 6.10 inch
LC 120: Ø 75 x 178 mm
Ø 2.95 x 7.01 inch
LC 250: Ø 75 x 228 mm
Ø 2.95 x 8.98 inch

TMLe

Drive – reusable
Electromechanical drive using external voltage: 9-30 V DC, I_{max} 0.5 A

Discharge period
Time-controlled (TIME)
Impulse-controlled (IMPULSE)

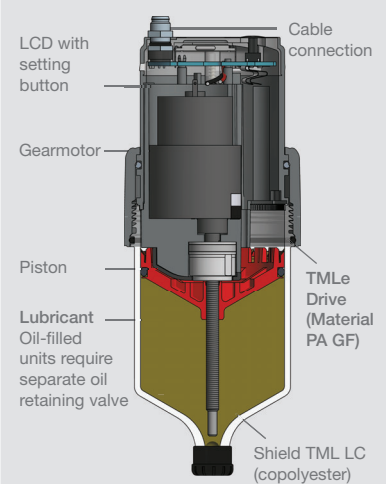
Lubricant volume
60 cc, 120 cc or 250 cc /
2.03 oz, 4.06 oz or 8.45 oz

Operating temperature
-20°C to +60°C / -4°F to 140°F

Pressure build-up
6 bar / 87 psi

Protection class
IP 65

Standard & special lubricants
Greases up to NLGI 2/oils



Dimensions
LC 60: Ø 72 x 160 mm
Ø 2.83 x 6.30 inch
LC 120: Ø 72 x 183 mm
Ø 2.83 x 7.20 inch
LC 250: Ø 72 x 233 mm
Ø 2.83 x 9.17 inch